

Mediaportal Report

25/05/2010

▶ **ABC Tropical North (Mackay)**
Rural Report - 25/05/2010 6:22 AM
Nicky Redl

Redl says WA mining company Galaxy Minerals will be the first in Australia to use solar tracking technology to generate energy. She says the company will soon start using lithium. She plays a recorded interview by Babs McHugh, Reporter, ABC, with Iggy Tan, Managing Director, Galaxy Minerals, who explains how the solar cells supplement the company's diesel generation of power, which will reduce CO2 emissions. He says the company has reduced its emissions by 190 tonnes over the year. Tan says the panels track the sun across the sky, producing 40% more power than the average solar cell. He says the energy produced is less than five to 10 percent of the company's total energy generation, but that it represents a positive step. Tan says energy storage is the key to making renewable energy more competitive. He says the company's lithium is exported to China, where it is converted for use in lithium ion batteries which are utilised in electric vehicles.

Interviewees: Iggy Tan, Managing Director, Galaxy Minerals
Duration: 4.24
Summary ID: W00039082266
© Media Monitors

Demographics

Male:	2300
Female:	1900
AB:	1700
GB:	2200
All People:	4200

24/05/2010

▶ **ABC South Coast WA (Albany)**
Breakfast - 24/05/2010 6:21 AM
John Cecil

Rural Report Preview with Owen Grieve: -West Australian Mining Company, Galaxy Minerals has a lithium mine near Ravensthorpe in the South East.
-Austrade Trade Commissioner, based in New Delhi, Michael Carter.

Duration: 1.42
Summary ID: W00039072952
This program or part thereof is syndicated to the following 1 station(s):-
ABC Great Southern WA (Wagin)
© Media Monitors

Demographics

Demographics are not available as the media outlet has not commissioned audience research into this timeslot.

01/05/2010

▶ **Going green no problem for niche producer**

Gold and Minerals Gazette, 01/05/10, General News, Page 24

By: None

Clip Ref: **00070315940**

312 words

Type: Feature

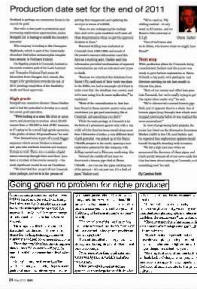
Photo: No

Sibling lithium producer Galaxy Resources Ltd has placed an order with Swan Energy Pty Ltd to install 15 large solar panels and two wind turbines generating a total 214 megawatt hours/year of clean green energy at its Ravensthorpe operation in Western Australia.

COPYRIGHT This report and its contents are for the use of Media Monitors' subscribers only and may not be provided to any third party for any purpose whatsoever without the express written permission of Media Monitors Pty Ltd.

DISCLAIMER The material contained in this report is for general information purposes only. Any figures in this report are an estimation and should not be taken as definitive statistics. Subscribers should refer to the original article before making any financial decisions or forming any opinions. Media Monitors makes no representations and, to the extent permitted by law, excludes all warranties in relation to the information contained in the report and is not liable to you or to any third party for any losses, costs or expenses, resulting from any use or misuse of the report.





Going green no problem for niche producer

Sibling lithium producer Galaxy Resources Ltd has placed an order with Swan Energy Pty Ltd to install 15 large solar panels and two wind turbines generating a total 214 megawatt hours/year of clean green energy at its Ravensthorpe operation in Western Australia.

The company will be the first miner in Australia to use the state-of-the-art solar generation tracking technology, which will supplement its diesel power generation on site

The unique tracking features will improve photovoltaic (PV) conversion efficiency by more than 40% over conventional fixed solar panels.

Galaxy's managing director Iggy Tan said the company was playing its part in the push to utilise renewable energy and reduce

greenhouse gas emissions. "Our renewable energy installation will remove about 190 tonnes of carbon dioxide emissions from the mine site each year, which is the equivalent of planting 19 hectares of forest every year," he said.

"The capital cost of the installation has already been factored into the Mt Cattlin \$79 million construction budget and provides an attractive payback".

Tan said that effective energy storage was the key to unlocking the potential benefits of renewable energy.

Power generation from wind, solar and waves was, by nature, variable and often inconsistent.

When coupled with energy storage systems – such as large banks of lithium ion

batteries – a competitive energy source was created.

"Electric vehicles are now moving from a concept to a reality, with many car manufacturers planning hybrid or electric models in the coming years," Tan explained.

"The only reason this is happening is the development of technology associated with lithium batteries.

"These high density powerful batteries have allowed laptops, mobile phones and power tools to be smaller, lighter and with a longer lifespan in the last few years.

"The bright future of lithium ion batteries all leads back to Galaxy as a company whose core focus is to supply the very important feedstock, lithium carbonate, for this growth industry."